

Justice Reinvestment Initiative in Kansas



Produced by Kansas Sentencing Commission (KSC), this report provides a five year overview of the most recent data in regards to eight performance measures. Those measures are 1) Kansas Department of Corrections (KDOC) prison population, 2) The state of Kansas's community supervision, 3) KDOC's jail backlog, 4) KDOC's prison composition, 5) overall crime rate for Kansas, 6) three year recidivism rates for Kansas, 7) recidivism rates based off of offenders risk level and 8) corrections spending.

These performance measures allow interested parties to view a data-driven framework of how the state of Kansas has implemented a justice reinvestment approach to our criminal justice system. It is crucial that these performance measures are analyzed and taken into consideration as policy makers continue to make cost efficient laws that best protect the citizens of Kansas.



Agency Contact:
George Ebo Browne
(785) 296-0923
ebob@sentencing.ks.gov



JRI in Kansas

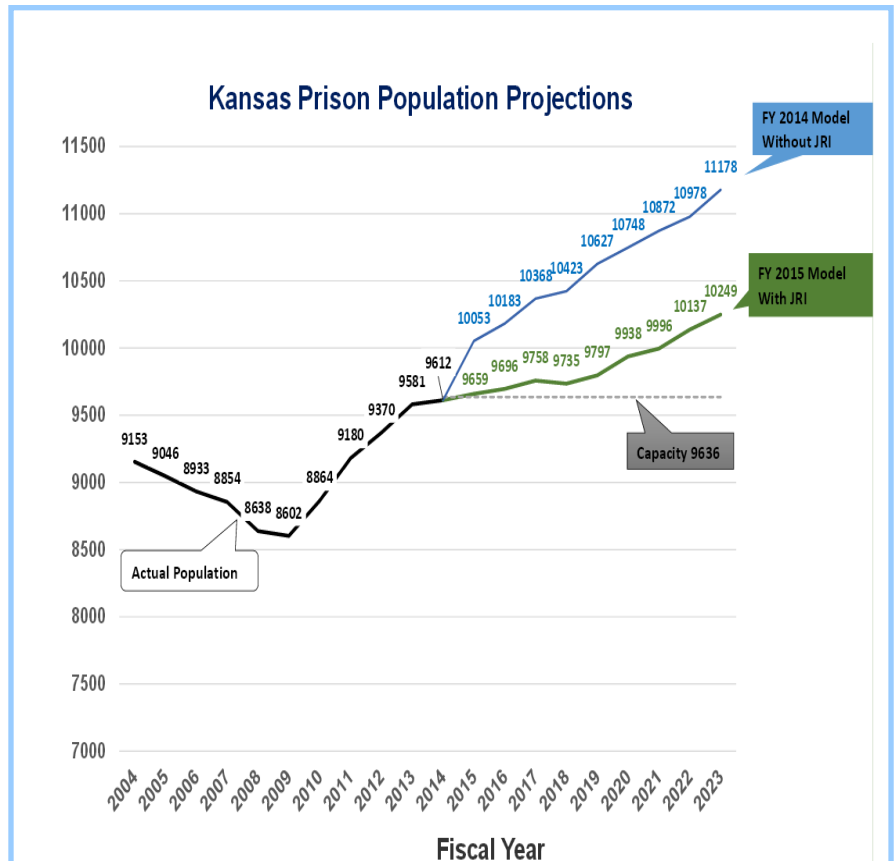
On June 1, 2013 the state of Kansas enacted House Bill 2170 as a justice reinvestment approach to increase public safety while reducing state spending in regards to offenders under community supervision.

This bill permits the use of two and three day “quick dip” jail sanctions to be administered to offenders under community supervision who commit a technical violation. Offenders who commit an additional technical violation after receiving a “quick dip” sanction are then eligible for a graduated sanction of 120 or 180 prison sentence through KDOC.

HB 2170 sanctions are specifically designated for offenders who commit a technical violation. Thus, offenders who commit a new offense (felony or misdemeanor) or abscond from community supervision are subject to a full revocation.

HB 2170 is projected to have an immense impact on the criminal justice system for the state of Kansas. In fact, a projection model produced by the KSC suggest HB 2170 will result in a prison reduction of over 800 inmates in the next five years.

These statistics and several others regarding the states correctional system and potential impact of JRI are included in the current report.



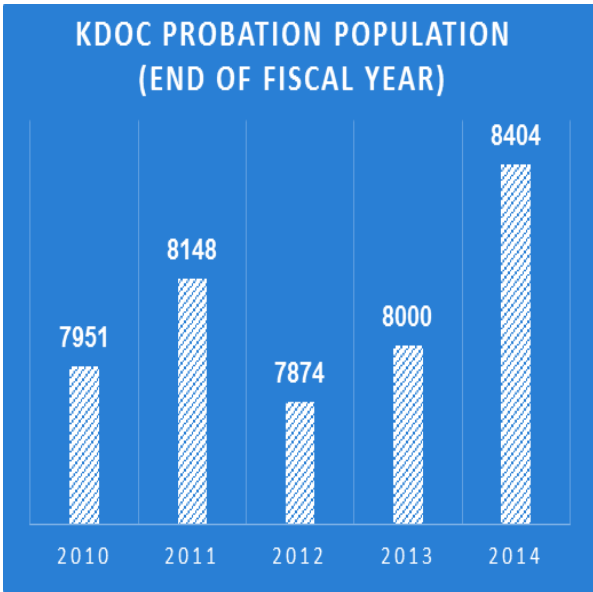
Source: KSC Prison Population Projection Report

Section Key:

Prison inmate: Persons under state jurisdiction.

Jurisdiction refers to the legal authority of state correctional officials over a prisoner, regardless of where the prisoner is held.

Kansas Community Supervision



Source: KDOC



Section Key:

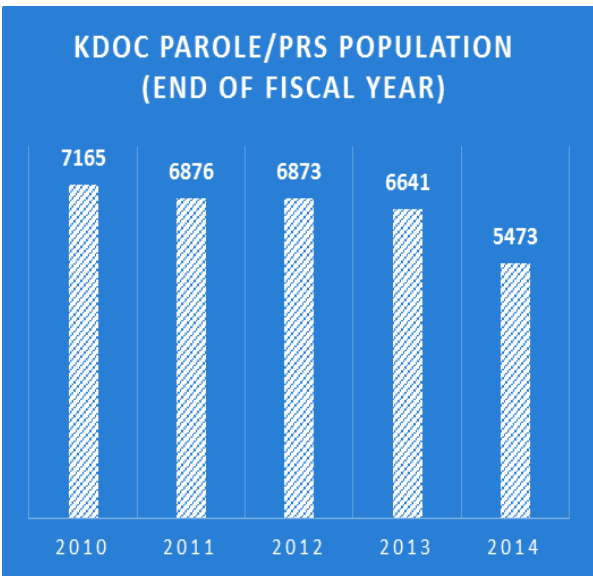
Community Corrections is the supervision of criminal offenders in the resident population, as opposed to confining offenders in secure correctional facilities.

Probation refers to adult offenders whom courts place on supervision in the community through a probation agency, generally in lieu of incarceration.

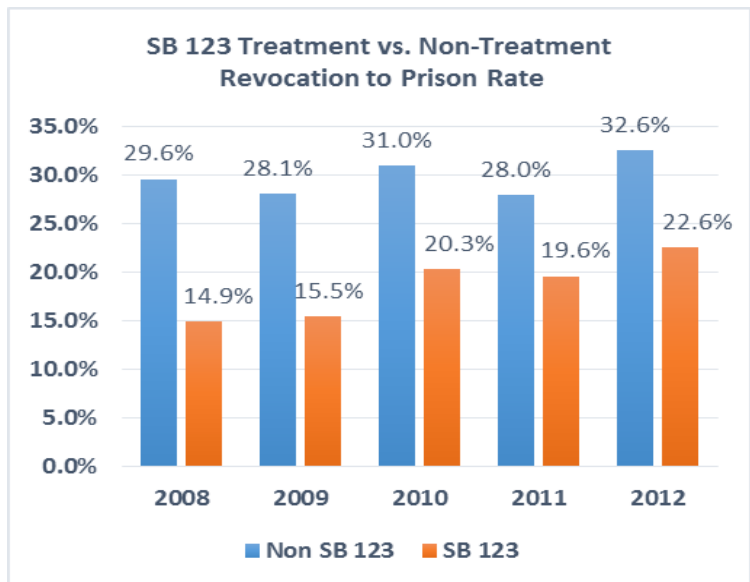
Parole/Post-Release Supervision (PRS) refers to criminal offenders who are released from prison to serve the remaining portion of their sentence and PRS term in the community.

Senate Bill 123 is an alternative sentencing policy for drug possession offenders who score moderate-very high on a criminal risk-need assessment (LSI-R) and high on a drug abuse assessment (SASSI-3) who are sentenced for a first or second felony drug possession to Community Corrections intensive supervision and required to complete a certified drug treatment program in lieu of incarceration.

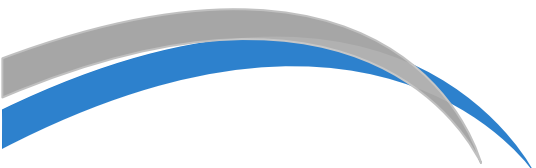
Non-SB 123 are felony drug and non-drug offenders who did not receive SB 123 drug treatment



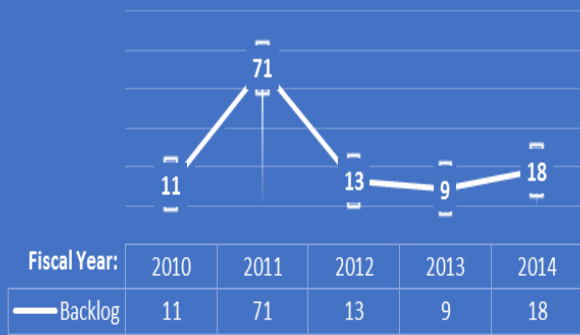
Source: KDOC Parole/Post-Release Supervision File



Source: KSC sentencing journal entry and probation revocation journal entry databases



KDOC JAIL BACKLOG



Source: KDOC

Section Key:

Jail Backlog refers to prison inmates who are incarcerated under the jurisdiction of KDOC; however temporarily severing their sentence in a county jail while waiting for KDOC's transfer.



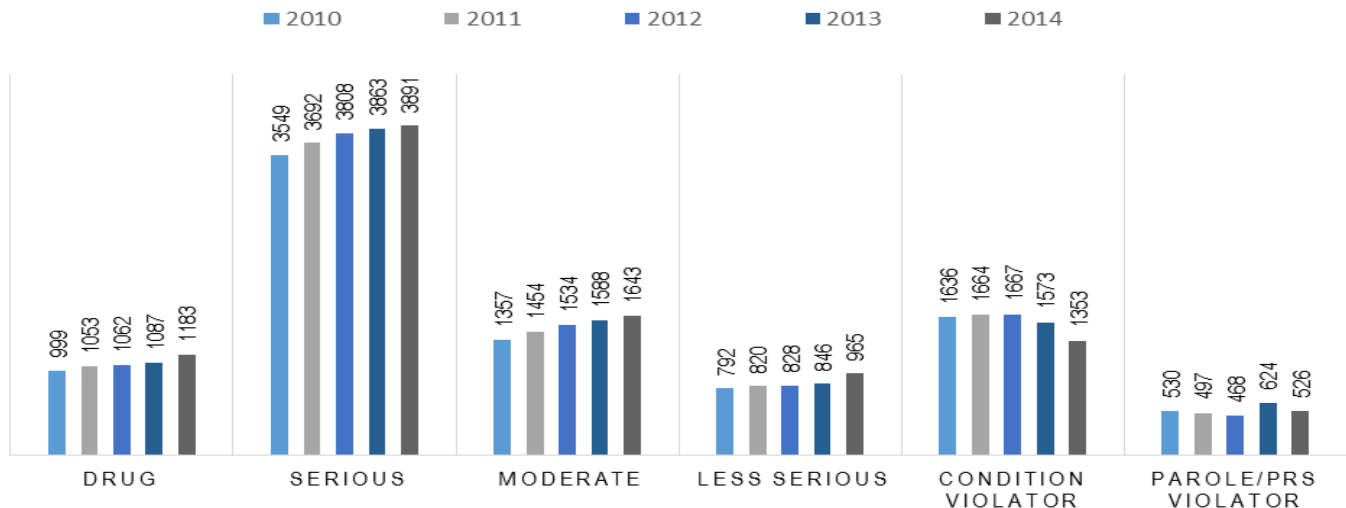
Overall Crime (FBI UCR)

The State of Kansas UCR rate per 100,000					
Year	2008	2009	2010	2011	2012
Violent Crime Rate	412.3	406.6	370.8	355.7	354.6
Property Crime Rate	3,386.1	3,225.9	3,116.6	3,088.6	3,143.2
Index Rate	3,798.4	3,632.5	3,487.4	3,444.3	3,497.8

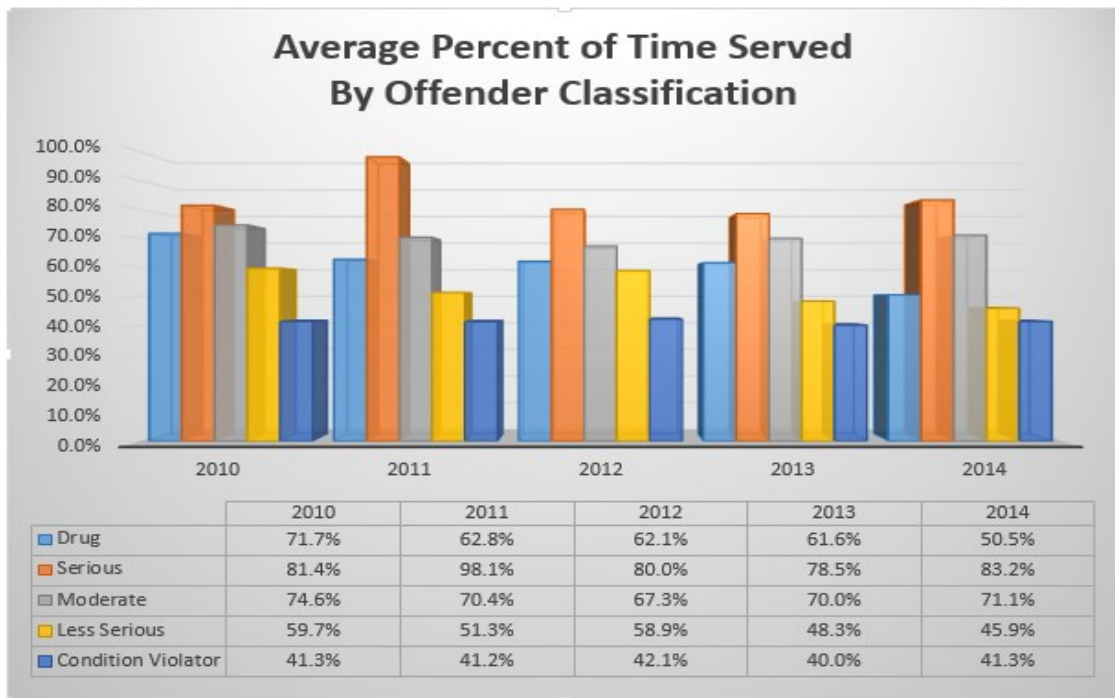
The State of Kansas UCR Totals					
Year	2008	2009	2010	2011	2012
Violent Crime Total	11,554	11,460	10,602	10,209	10,232
Property Crime Total	94,882	90,930	89,109	88,655	90,710
Index Total	106,436	102,390	99,711	98,864	100,942

Source: FBI Uniform Crime Report Data

KDOC PRISON COMPOSITION BY OFFENDER CLASSIFICATION



Source: KDOC Stock File



Source: KDOC Release File

KDOC Average Length of Sentence & Stay										
Fiscal Year	2010		2011		2012		2013		2014	
Offender Classification	Avg sent	Avg stay	Avg sent	Avg stay	Avg sent	Avg stay	Avg sent	Avg stay	Avg sent	Avg stay
Drug	36.9	27.8	36.9	25.8	34.0	22.8	35.7	23.9	35.3	20.0
Serious	109.9	78.0	99.3	82.8	108.4	85.4	107.4	82.9	113.4	90.9
Moderate	54.2	41.2	54.9	41.0	53.5	38.2	54.4	40.0	54.4	37.0
Less Serious	21.6	12.8	22.4	13.3	22.0	13.3	22.4	12.1	21.7	10.9
Condition Violator	21.2	10.9	20.8	10.5	21.7	11.0	22.0	11.1	23.1	11.8
Parole/PRS Violator	N/A	7.9	N/A	7.8	N/A	7.2	N/A	7.0	N/A	5.7

Section Key:

Drug: Offenders who have been convicted of a felony drug charge and sentenced according to the KSGA Sentencing Guidelines Act (KSGA) Drug Grid.

Serious: Offenders who have been convicted of a felony whose sentence falls within severity levels 1-3 of the KSGA Non-drug grid or is convicted of an Off-grid felony offense.

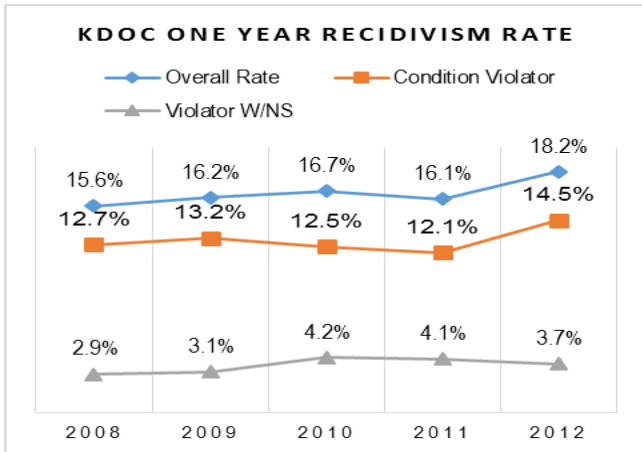
Moderate: Offenders who have been convicted of a felony whose sentence falls within severity levels 4-6 of the KSGA.

Less Serious: Offenders who have been convicted of a felony whose sentence falls within severity levels 7-10 of the KSGA.

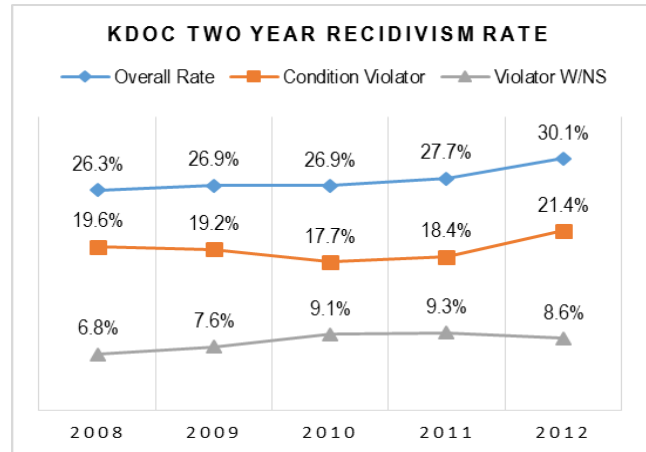
Condition Violator: Offenders who are on felony probation and commit a violation of their probation conditions. On and after July 1, 2013, these offenders are eligible for JRI graduated sanctions for technical violations.

Parole/PRS Violator: Offenders who are on supervised release following an incarceration term for a felony offense and commit a violation of supervision conditions.

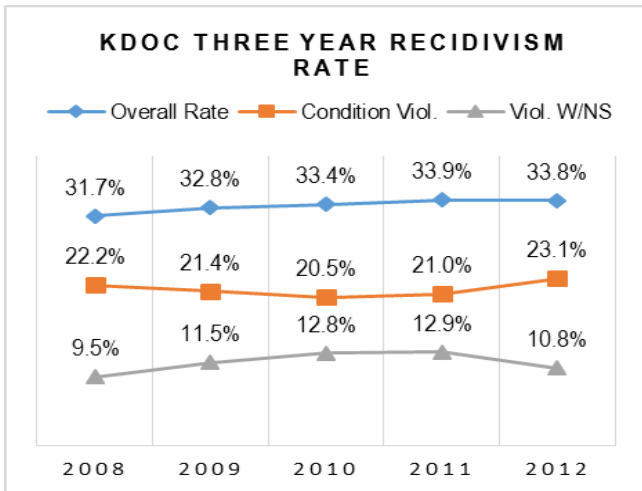
Three Year Recidivism



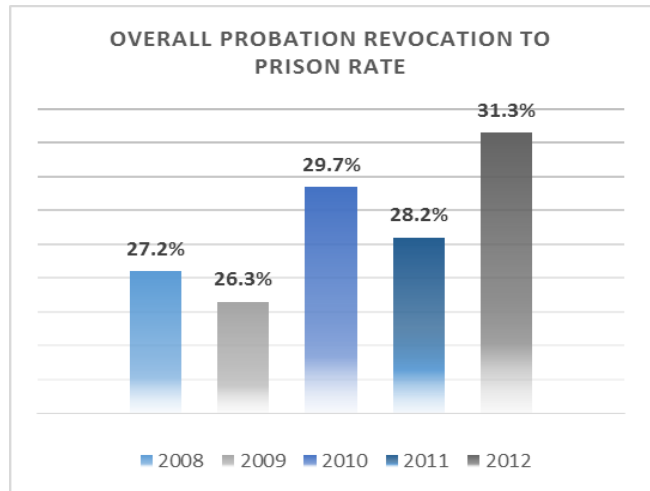
Source: KDOC



Source: KDOC



Source: KDOC



Source: KSC sentencing journal entry and probation revocation databases

Rearrest Rate			
Fiscal Year	Within 1 Year	Within 2 Years	Within 3 Years
2008	20.9%	34.4%	44.1%
2009	21.6%	35.3%	44.6%
2010	21.5%	34.3%	
2011	20.5%		
2012			

Source: KDOC Release and KBI Arrest Files

Reincarceration Rate			
Fiscal Year	Within 1 Year	Within 2 Years	Within 3 Years
2008	16.8%	26.7%	31.8%
2009	16.5%	26.5%	32.0%
2010	17.9%	27.2%	33.8%
2011	16.3%	27.1%	33.1%
2012	17.4%	29.0%	

Source: KDOC Release and Admission File

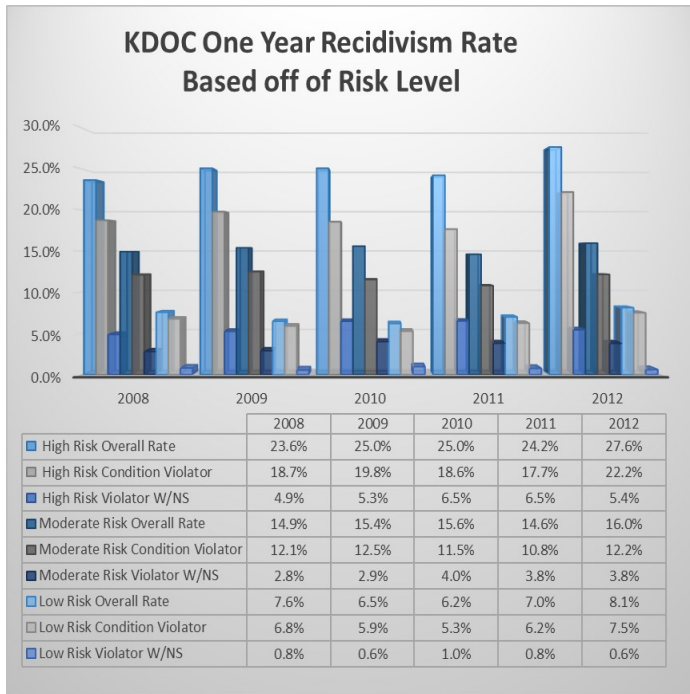
Section Key:

Overall recidivism rate: The overall recidivism rate for all offenders under KDOC supervision.

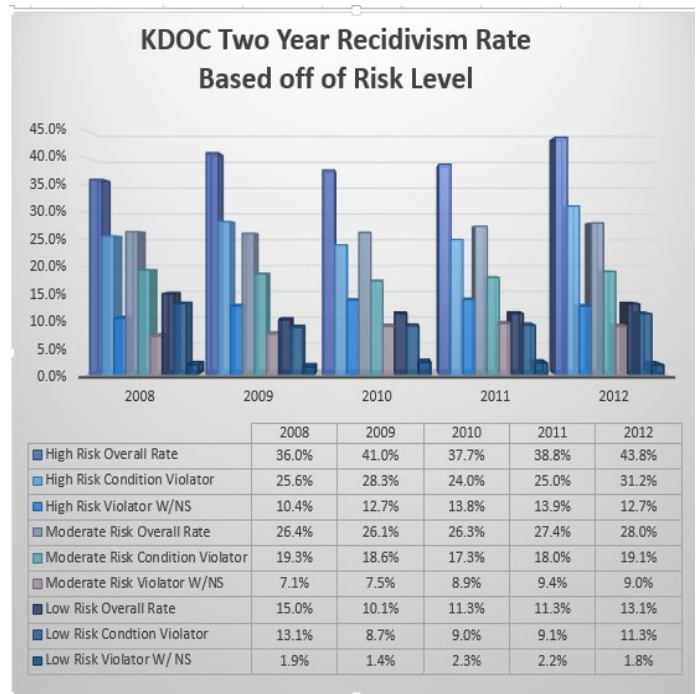
Condition Violator recidivism rate: The rate of recidivism for offenders who are under community supervision by KDOC (Probation or Parole) and violate a condition of their release.

Violator with a New Sentence (Violator W/NS): The rate of recidivism for offenders who are under community supervision by KDOC (Probation or Parole/PRS) and are sentenced for a new crime.

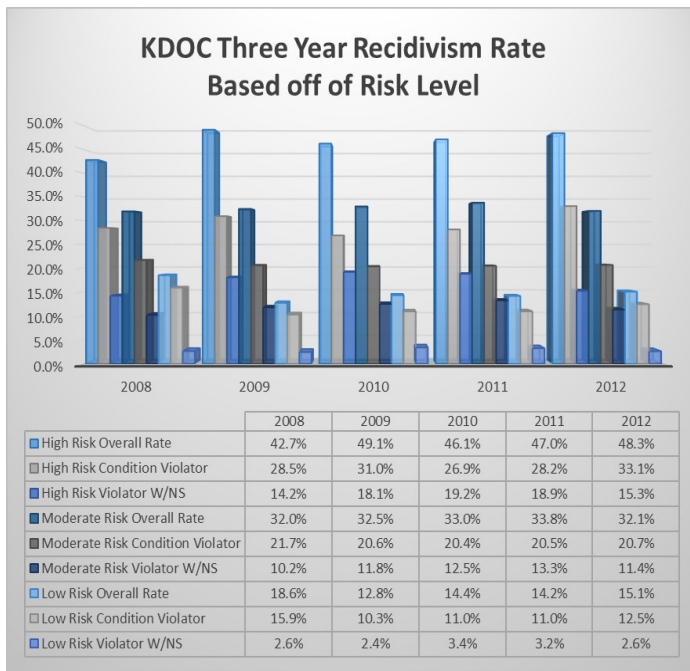
Three Year Recidivism by Risk Level



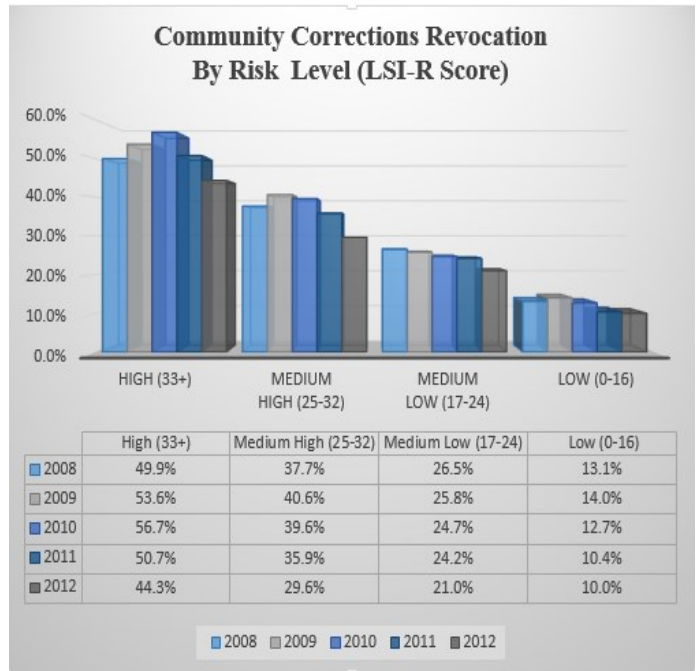
Source: KDOC



Source: KDOC



Source: KDOC



Source: KDOC TOADS

Section Key:

High Risk Offender: An offender whose LSI-R score is 33 or above.

Moderate Risk Offender: An offender whose LSI-R score is between 19-32.

Low Risk Offender: An offender whose LSI-R score is 18 or less.

Corrections Spending

KDOC 2015 Budget	
Prisoner Review Board	\$ 440,895
Victim Services	\$ 695,441
Inmate Medicaid Assistance	\$ 1,052,632
Reentry Services	\$ 3,523,962
Information Systems	\$ 4,571,179
Juvenile Psychiatric Res. Treatment	\$ 4,773,647
Debt Service	\$ 7,074,915
Administration	\$ 7,159,543
Capital Improvements	\$ 7,783,602
Offender Programs	\$ 9,170,247
Parole Services	\$ 12,537,131
Food Service	\$ 14,285,777
Community Corrections	\$ 24,110,385
Juvenile Services	\$ 47,741,255
Inmate Health Care	\$ 56,888,801
Subtotal - KDOC	\$ 201,809,412

Source: KDOC

Adult Facility Operations	
Larned Correctional Mental Health	\$ 11,191,839
Winfield	\$ 13,333,438
Ellsworth	\$ 14,733,820
Topeka	\$ 15,488,322
Norton	\$ 15,536,784
El Dorado	\$ 29,160,699
Hutchinson	\$ 31,616,052
Lansing	\$ 41,621,774
Subtotal - Adult Facilities	\$ 172,682,728
Total-KDOC Systemwide Budget	411,886,840

Source: KDOC

