

STEPPING UP

A National Initiative Reducing
Overincarceration of People with Mental
Illnesses

Kansas Stepping Up TA Center

Megan Davidson, Program Director, The Council of State Governments Justice Center

Audra Goldsmith, Senior Policy Analyst, The Council of State Governments Justice Center

September 13, 2023



Agenda

1. Introductions
2. Stepping Up Initiative
3. History and Overview of the KS TA Center
4. Summary of the TA Center 2020–2023
5. Trends Observed across the State
6. Questions and Answers



Introductions

- Megan Davidson, Program Director, The Council of State Governments Justice Center
- Audra Goldsmith, Senior Policy Analyst, The Council of State Governments Justice Center



STEPPINGUP

Stepping Up is a national initiative to reduce the number of people with mental illnesses in jails.



Justice Center
THE COUNCIL OF STATE GOVERNMENTS

#StepUp4MentalHealth
www.StepUpTogether.org



Factors Driving the Crisis



Disproportionately higher rates of arrest



Longer stays in jail



Limited access to health care



Higher recidivism rates



Low utilization of evidence-based practices



More criminogenic risk factors

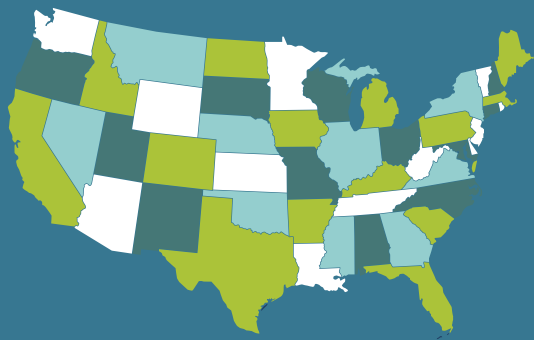


STEPPINGUP

8 Years and Counting



More than **570** counties across **45** states have joined Stepping Up to reduce the prevalence of mental illnesses in jails.



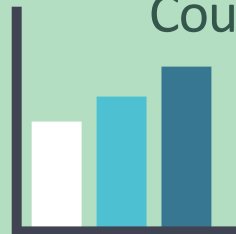
48% of Americans live in a Stepping Up county.



Approximately **2 million** times each year, people who have serious mental illnesses are booked into jails.



40+ Innovator Counties are blazing the trail in data collection.



5 states have launched statewide Stepping Up initiatives.



The Stepping Up Six Questions Framework

1

Is our leadership committed?

2

Do we conduct timely screening and assessments?

3

Do we have baseline data?

4

Have we conducted a process analysis and inventory of services?

5

Have we prioritized policy, practice, and funding improvements?

6

Do we track progress?



Four Key Measures



1. Reduce the number of people with mental illnesses booked into jails.



2. Reduce their average lengths of stay in jail.



3. Increase connection to treatment for people who have mental illnesses.



4. Reduce recidivism rates for people who have mental illnesses.



STEPPINGUP

The Four Key Measures & Potential System Improvements

1. Reduce # of Bookings for SMI

- Police-Mental Health Collaborations
- CIT training
- Co-responder model
- Crisis diversion centers
- Reducing policing of quality-of-life offenses

2. Shorten ALOS

- Improve/shorten processes for competency proceedings
- Routine screening and assessment
- Pretrial risk screening, release, supervision, and diversion

3. Increase Connections to Care

- Expand community-based treatment, services, and housing
- Leverage Medicaid and federal, state, and local resources

4. Reduce Recidivism

- Apply Risk-Need-Responsivity and the Behavioral Health Framework
- Specialized probation
- Ongoing program evaluation

Stepping Up in Kansas



History of the KS Stepping Up TA Center

- KS Legislative Division of Post Audit, 2018 Report
 - Noted significant lack of mental health training for jail staff and services available in KS jails
- Governor Kelly's Behavioral Health Services Planning Council (GBHSPC) response:
 - Justice-Involved Youth and Adults Subcommittee
 - Mental Health Services in Jail Work Group Recommendations
 - KS Department of Aging and Disability Services (KDADS) funded the launch of the KS Stepping Up TA Center beginning in July 2020 and just got renewed for an additional year (through June of 2024).



Overview of the TA Center

Goal: Position Kansas counties to do the following:

- 1) Have accurate baseline data on the number of people with mental illnesses in jails.
- 2) Develop an implementation plan based on each county's needs.
- 3) Set reduction targets to track progress on reducing this number.



Objectives of the TA Center



Establish and implement data-driven plans to reduce the number of people with mental illnesses in local jails.



Identify best practice sites across the state to act as peer mentors and facilitate connections with other counties.



Create a central information bank for counties across KS on the intersection of mental illness and criminal justice.



Work with the KS Stepping Up Leadership Team to determine state-level policies that can be adjusted or implemented to improve local-level Stepping Up efforts.



Work of the KS Stepping Up TA Center

- Dedicated staff point of contact based in Kansas (training, 1:1 TA, webinars, etc.)
- Peer connections with sites across Kansas and nationally
- Access to national experts and resources on best practices
- Guidance on the high-impact strategies and policies that achieve lasting results
- Open line of communication between county & state leaders to guide policy reform efforts and resource allocation



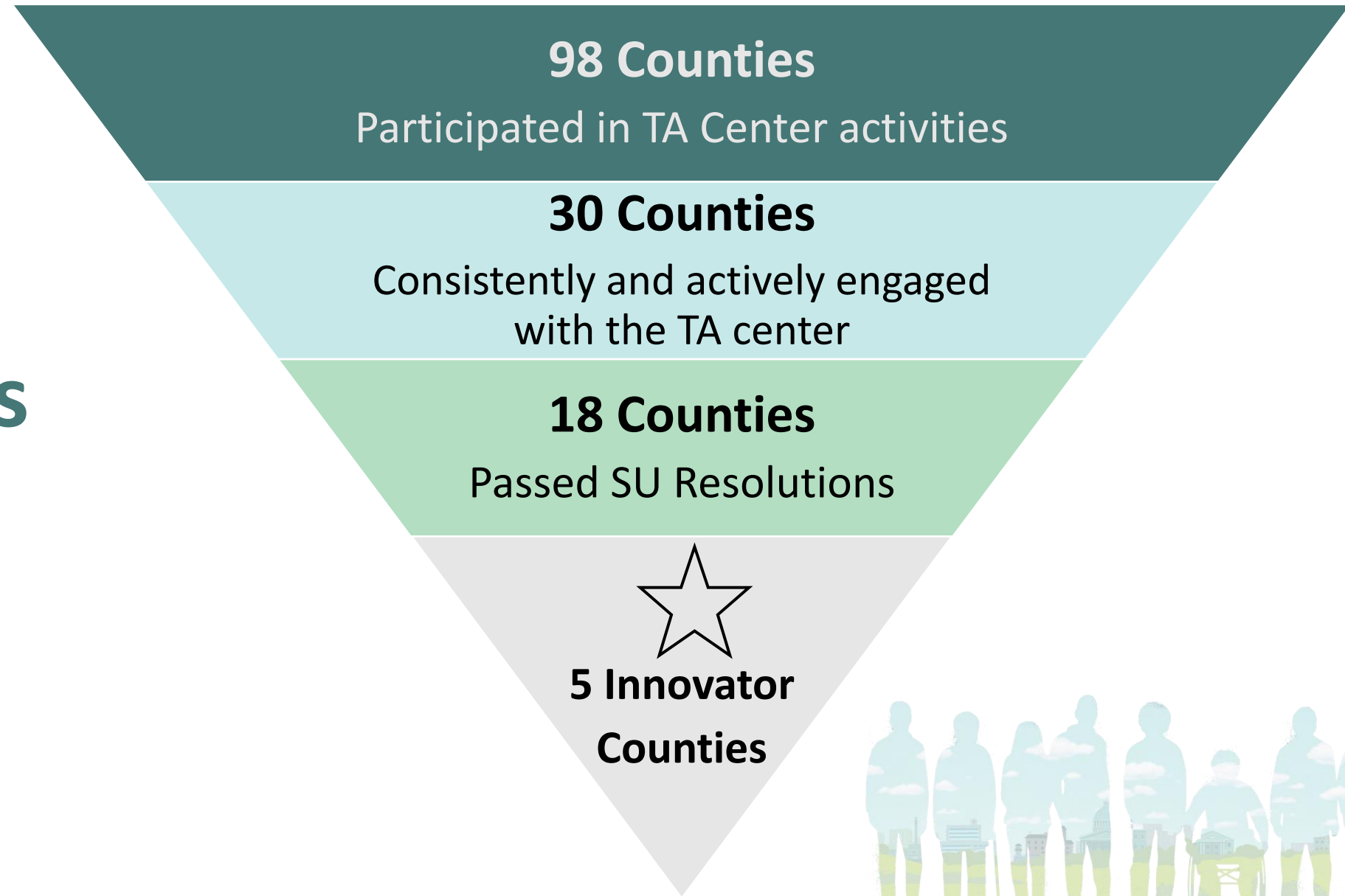
TA Center Collaboration and Partnerships

Collaboration with Cross-Systems Organizations and Committees:

- ✓ JIYA
- ✓ R & F Subcommittee
- ✓ Kansas Sheriff's Association
- ✓ KS Association of Chiefs of Police
- ✓ Association of Community Mental Health Centers of KS
- ✓ KS Association of Counties
- ✓ Multi-Branch Community of Practice statewide workgroup



Stepping Up Kansas by the Numbers



Statewide Trends

Prioritized Strategies

- Crisis response systems
- Competency to stand trial process
 - Mobile competency restoration
- Jail navigators

Common Challenges

- Lack of resources
- Workforce shortage
- Rural and Frontier areas:
 - Transportation
 - Access to services
 - Broadband access

What's Next for Kansas Stepping Up?

- Continued operation and expansion of SU TA Center
- Planning and implementation of three-year project focused on launching a Juvenile Justice Model for Stepping Up in Kansas
- Kansas to be the first pilot site for JJ Stepping Up!
- Will also conduct a systemwide landscape review of KS JJ system to inform model development, resource development, and corresponding TA Center efforts





Questions and Answers



Kansas Stepping Up Technical Assistance Center

THE
STEPPINGUP
I N I T I A T I V E

KANSAS

- Audra Goldsmith, agoldsmith@csg.org
- Be added to the center's distribution list:
KansasSteppingUp@csg.org
- www.stepuptogether.org/ta/kansas



**Justice
Center**